

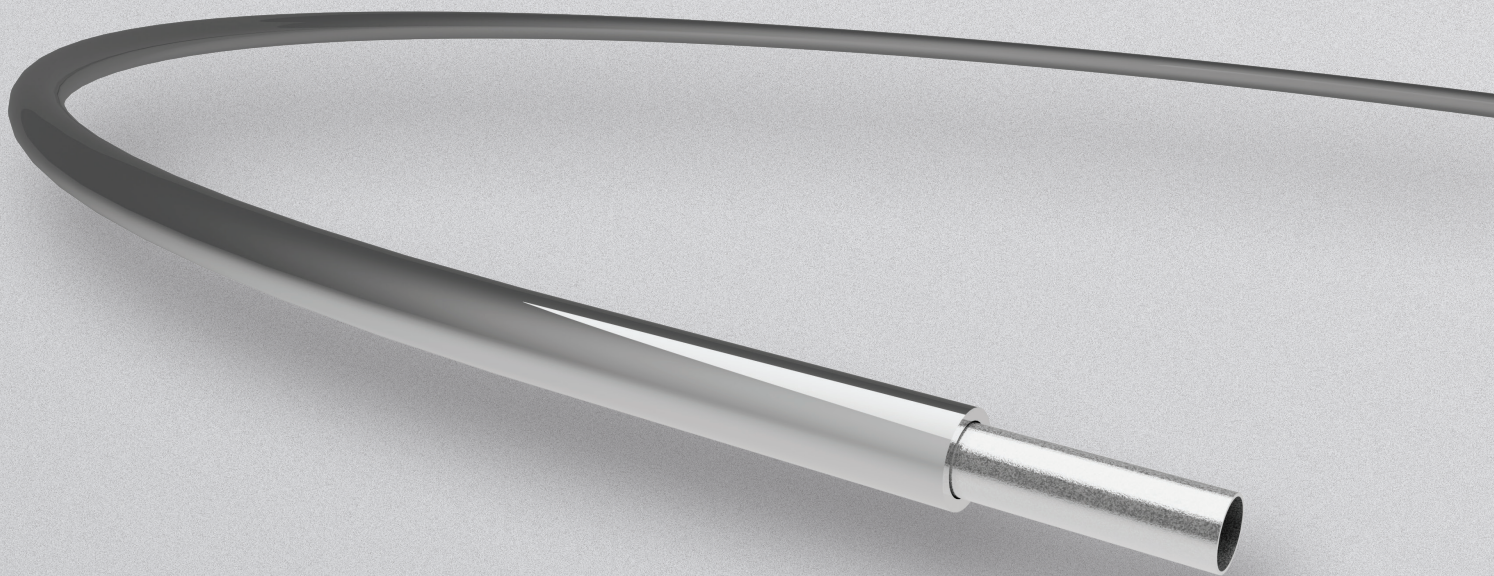
# CO<sub>2</sub> Laser Fiber

Otolaryngology

Gynecology

Dermatology

High quality, flexible light guide for CO<sub>2</sub> lasers.



- Available as medical device or bulk fiber
- Dual transmission of CO<sub>2</sub> laser and aiming beam
- Customization possibilities for product design
- Compatible with EO sterilization



CO<sub>2</sub> laser fibers are a very versatile instrument for delivering CO<sub>2</sub> laser power from the source to the treatment site on the patient and overcome the limitations of articulated arms and mirrors. CO<sub>2</sub> laser fibers can be an alternative to the rigid systems in almost all medical applications. The use of CO<sub>2</sub> laser fibers allows to reach hardly accessible targets in the human body more conveniently in practically all medical disciplines.

Lightguide's CO<sub>2</sub> Laser Fibers are available as bulk fiber material or customer special assembly, with or without connector and optional sterilization and labeling. All patient-contacting materials are certified biocompatible.

## Emission profile



## Customization | CO<sub>2</sub> Laser Fiber

Fiber type	CO2.300	CO2.500	CO2.750
Glass inner diameter	300 µm	500 µm	750 µm
Glass outer diameter	400 µm	650 µm	950 µm
Outer diameter fiber	500 µm	1040 µm	1300 µm
Straight loss dB/m	< 2.0	< 0.8	< 0.5
Wavelength	9.6 µm up to 10.6 µm (others on request)		

## Lightguide in The World

Lightguide International | Livani, Latvia

Lightguide Germany | Meckenheim, Germany

Lightguide USA | San Jose, California, USA

Lightguide China | Pudong, Shanghai, P.R.C.